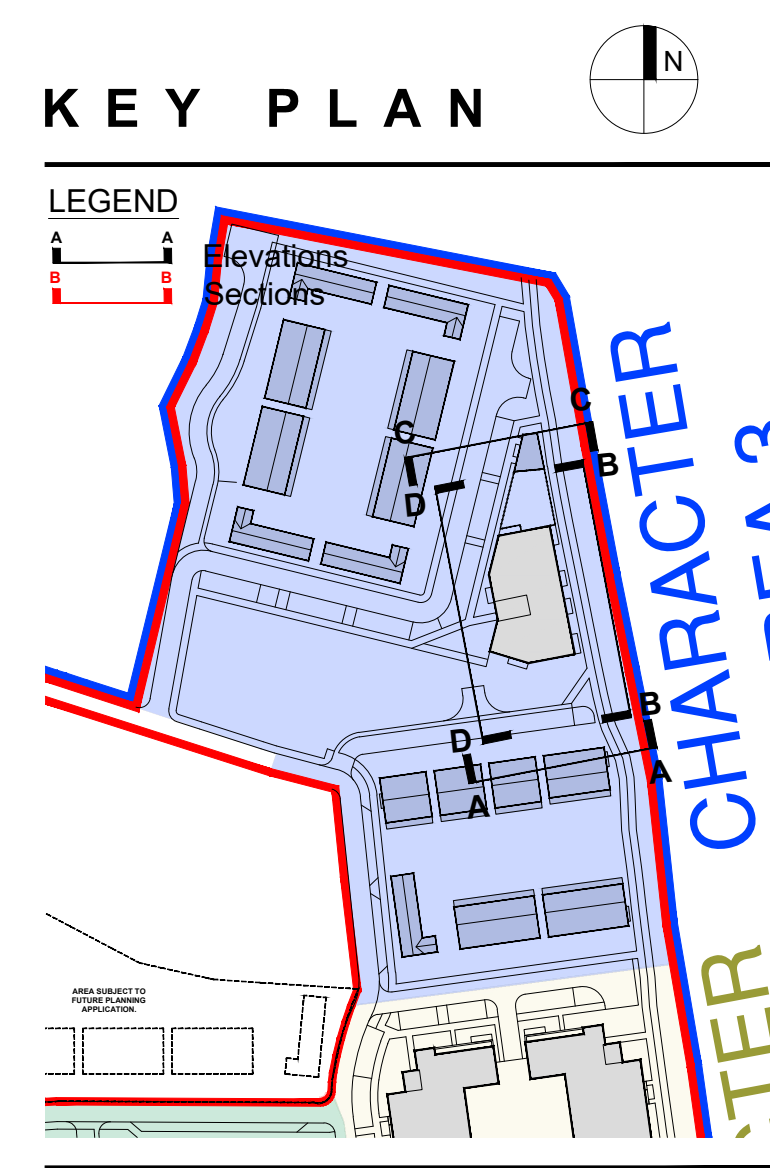




South Facing Elevation AA  
Character Area 3 (Red Stock Brick)



East Facing Elevation BB



North Facing Elevation CC



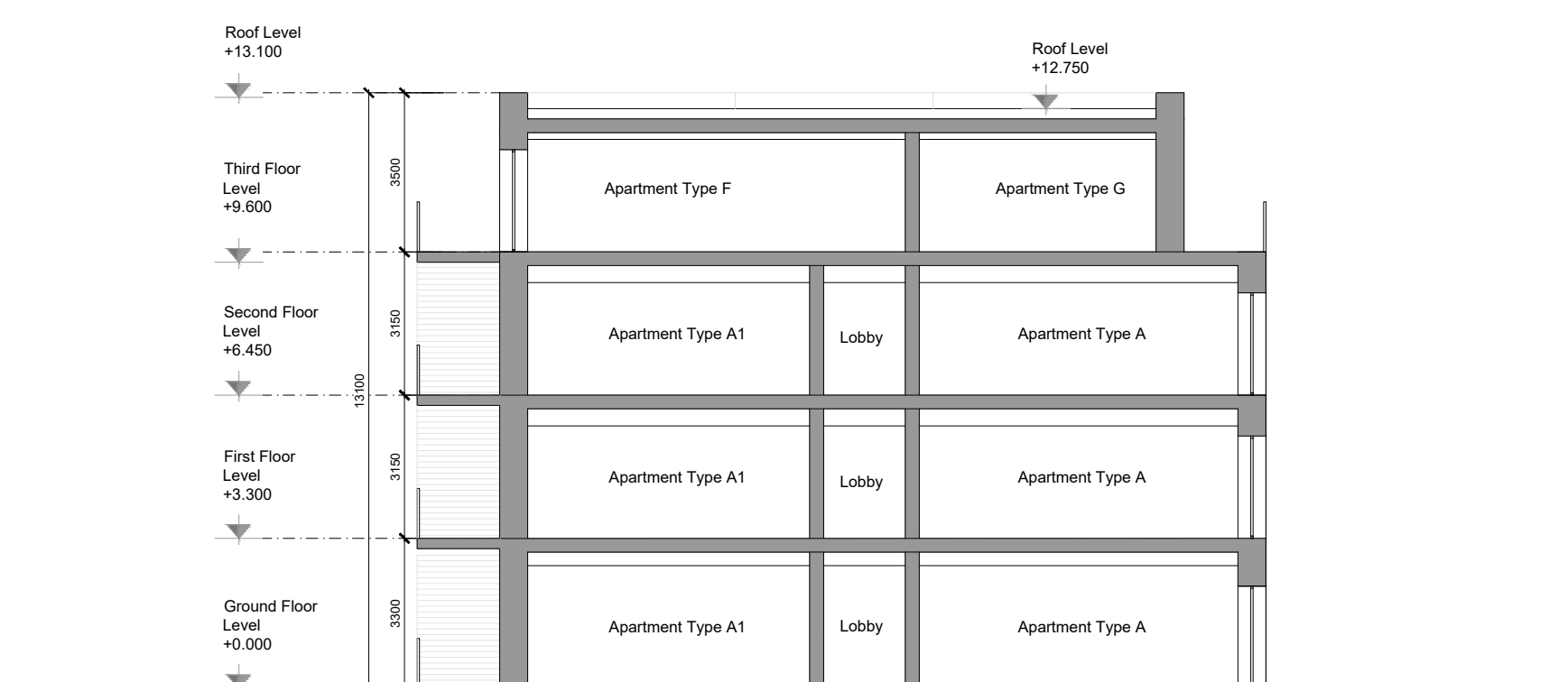
West Facing Elevation DD

### GENERAL NOTES

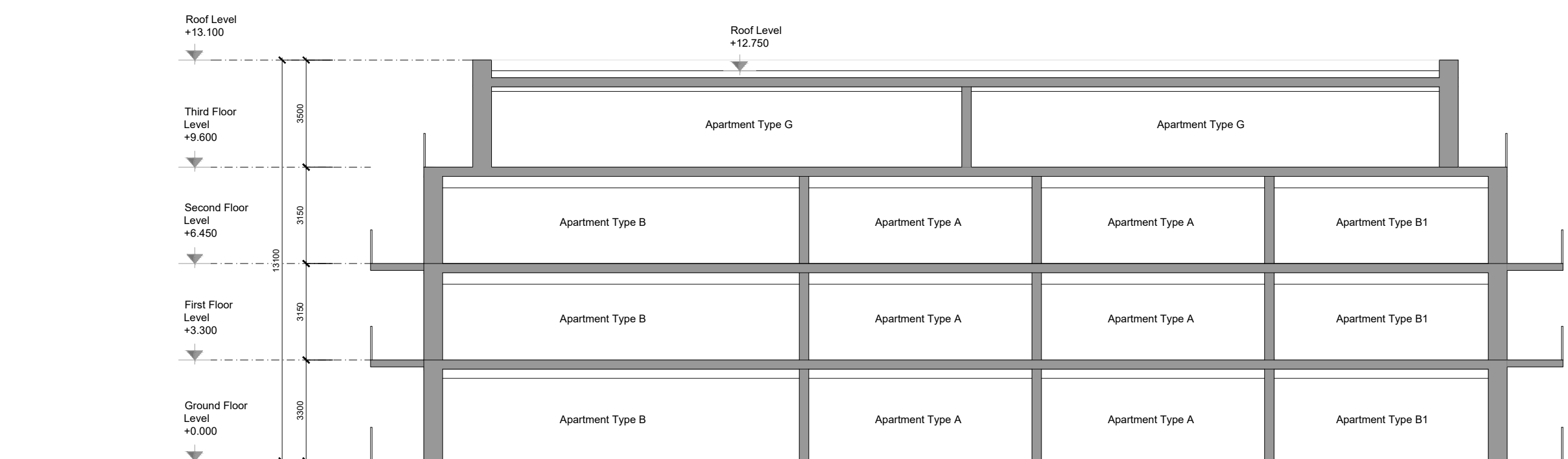
THIS DRAWING TO BE READ IN CONJUNCTION WITH ARCHITECT'S DRAWINGS, CONSULTANT ENGINEER'S DRAWINGS AND SPECIFICATIONS & LANDSCAPE ARCHITECT'S DRAWINGS  
REFER TO ARCHITECT'S SITE PLAN PL02 FOR NORTH ORIENTATION.  
LEVELS GIVEN ON HOUSE TYPE DRAWINGS ARE GIVEN TO A LOCAL ABSOLUTE ZERO LEVEL. FOR SPECIFIC LEVELS DEPENDING ON INDIVIDUAL UNIT LOCATION, REFER TO ARCHITECT'S CONTEXT SECTIONS AND ENGINEER'S DRAWINGS WHERE LEVELS ARE ALL GIVEN IN RELATION TO LAND SURVEYOR'S BENCHMARK BASED ON MALIN HEAD DATUM LEVEL.

### NOTES ON FINISHES:

- ROOF: TO BE FINISHED IN SINGLE PLY ROOFING MEMBRANE OR SIMILARLY APPROVED
- WALLS: SELECTED CLAY BRICKWORK WHERE INDICATED OTHERWISE PAINTED SAND / CEMENT RENDER, SELF COLOURED RENDER OR ZINC CLADDING. EXPRESSED BANDS AROUND EXTERNAL OPES/EXPRESSED LINTOLS OVER EXTERNAL OPES WHERE INDICATED TO BE RECONSTITUTED STONE (LIGHT CREAM LIMESTONE OR GRANITE EFFECT) OR RENDER
- JOINERY: ALL WINDOWS AND DOORS, FRAMES AND LEAVES, TO BE ALUMINIUM POWDER-COATED TO APPROVED COLOUR UPVC OR SELECTED TIMBER. OBTUSURE GLAZING WHERE INDICATED TO SENSITIVE WINDOWS.
- RAINWATER GOODS: GUTTERS, DOWNPIPES, AND FIXINGS TO BE UPVC OR ALUMINIUM POWDER COATED TO SELECTED COLOUR TO MATCH ROOF SLATES
- BALCONIES: HANDRAILS TO BE MILD STEEL GALVANISED AND PAINTED TO SELECTED COLOUR WITH SAFETY-GLAZED BALUSTRADES.



Section AA



Section BB

### NOTES:

DO NOT SCALE FROM DRAWINGS. WORK TO FIGURED DIMENSIONS ONLY. ARCHITECT TO BE NOTIFIED OF ALL DISCREPANCIES.

### REVISIONS

DATE	DESCRIPTION	No.

	PROJECT TITLE:	BROOMFIELD, BACK ROAD, MALAHIDE	DATE:	FEB 22	DRAWN BY:	POR
	DRAWING TITLE:	APARTMENT BLOCK C ELEVATIONS & SECTIONS	SCALE:	1:200	REVISION:	-
1 Grantham Street, Dublin 8, D08 A8Y7, Ireland. Tel: 01-4788700 Fax: 01-4788711 E-Mail: arch@mcorm.com		JOB NO:	18034	DRAWING NO:	PL212	